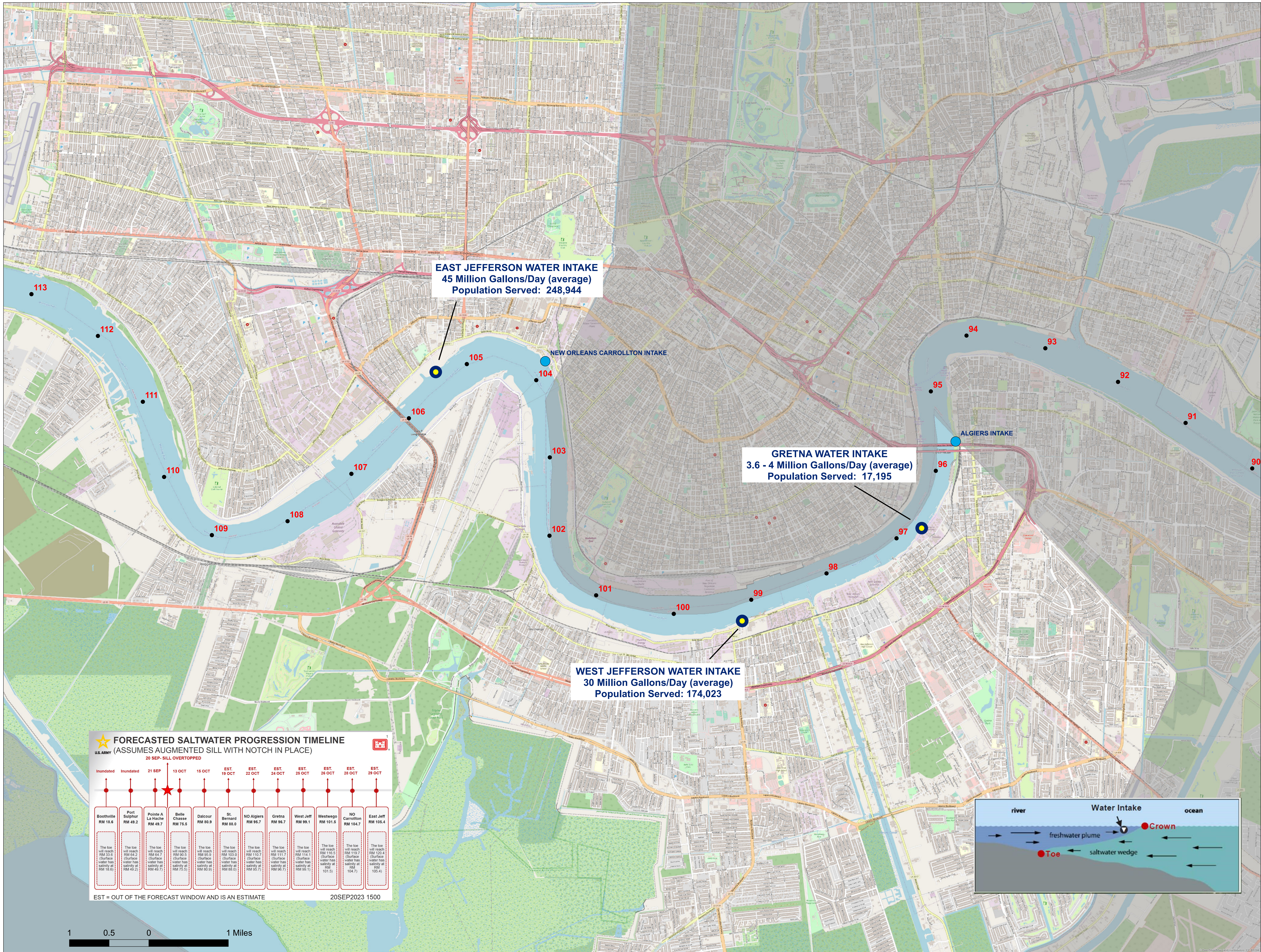


# Saltwater Intrusion

## Jefferson Parish, LA



**EAST JEFFERSON WATER INTAKE**  
 45 Million Gallons/Day (average)  
 Population Served: 248,944

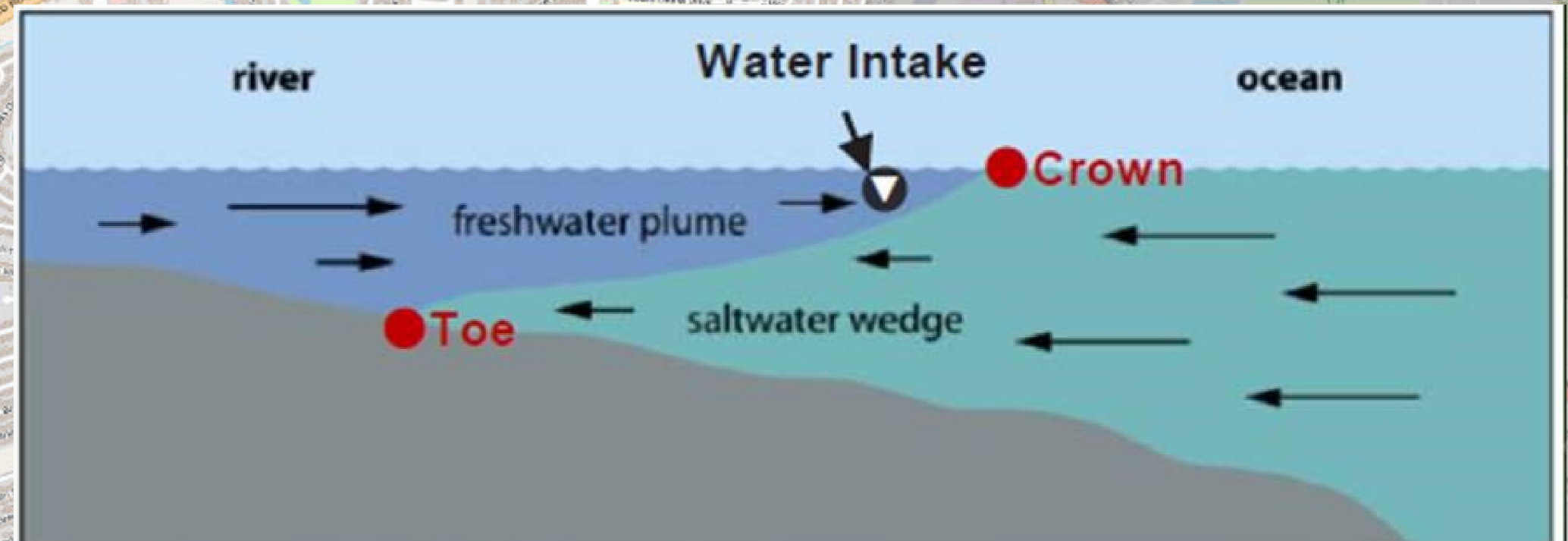
**GRETRNA WATER INTAKE**  
 3.6 - 4 Million Gallons/Day (average)  
 Population Served: 17,195

**WEST JEFFERSON WATER INTAKE**  
 30 Million Gallons/Day (average)  
 Population Served: 174,023

**FORECASTED SALTWATER PROGRESSION TIMELINE**  
 U.S. ARMY (ASSUMES AUGMENTED SILL WITH NOTCH IN PLACE)  
 20 SEP- SILL OVERTOPPED

Inundated	Inundated	21 SEP	13 OCT	15 OCT	EST. 19 OCT	EST. 22 OCT	EST. 24 OCT	EST. 25 OCT	EST. 26 OCT	EST. 28 OCT	EST. 29 OCT
Boothville RM 18.6	Port Sulphur RM 49.2	Pointe A La Hache RM 49.7	Belle Chasse RM 75.5	Dalcor RM 80.9	SL Bernard RM 88.0	NO Algiers RM 95.7	Gretna RM 96.7	West Jeff RM 99.1	Westwego RM 101.5	NO Carrollton RM 104.7	East Jeff RM 105.4
The toe will reach RM 33.2 (Surface water has salinity at RM 18.0)	The toe will reach RM 64.2 (Surface water has salinity at RM 49.2)	The toe will reach RM 64.7 (Surface water has salinity at RM 49.7)	The toe will reach RM 80.2 (Surface water has salinity at RM 75.5)	The toe will reach RM 85.9 (Surface water has salinity at RM 80.9)	The toe will reach RM 100.4 (Surface water has salinity at RM 88.0)	The toe will reach RM 110.7 (Surface water has salinity at RM 95.7)	The toe will reach RM 111.7 (Surface water has salinity at RM 96.7)	The toe will reach RM 114.1 (Surface water has salinity at RM 99.1)	The toe will reach RM 119.5 (Surface water has salinity at RM 101.5)	The toe will reach RM 119.7 (Surface water has salinity at RM 104.7)	The toe will reach RM 120.4 (Surface water has salinity at RM 105.4)

EST = OUT OF THE FORECAST WINDOW AND IS AN ESTIMATE  
 20SEP2023 1500



1 0.5 0 1 Miles